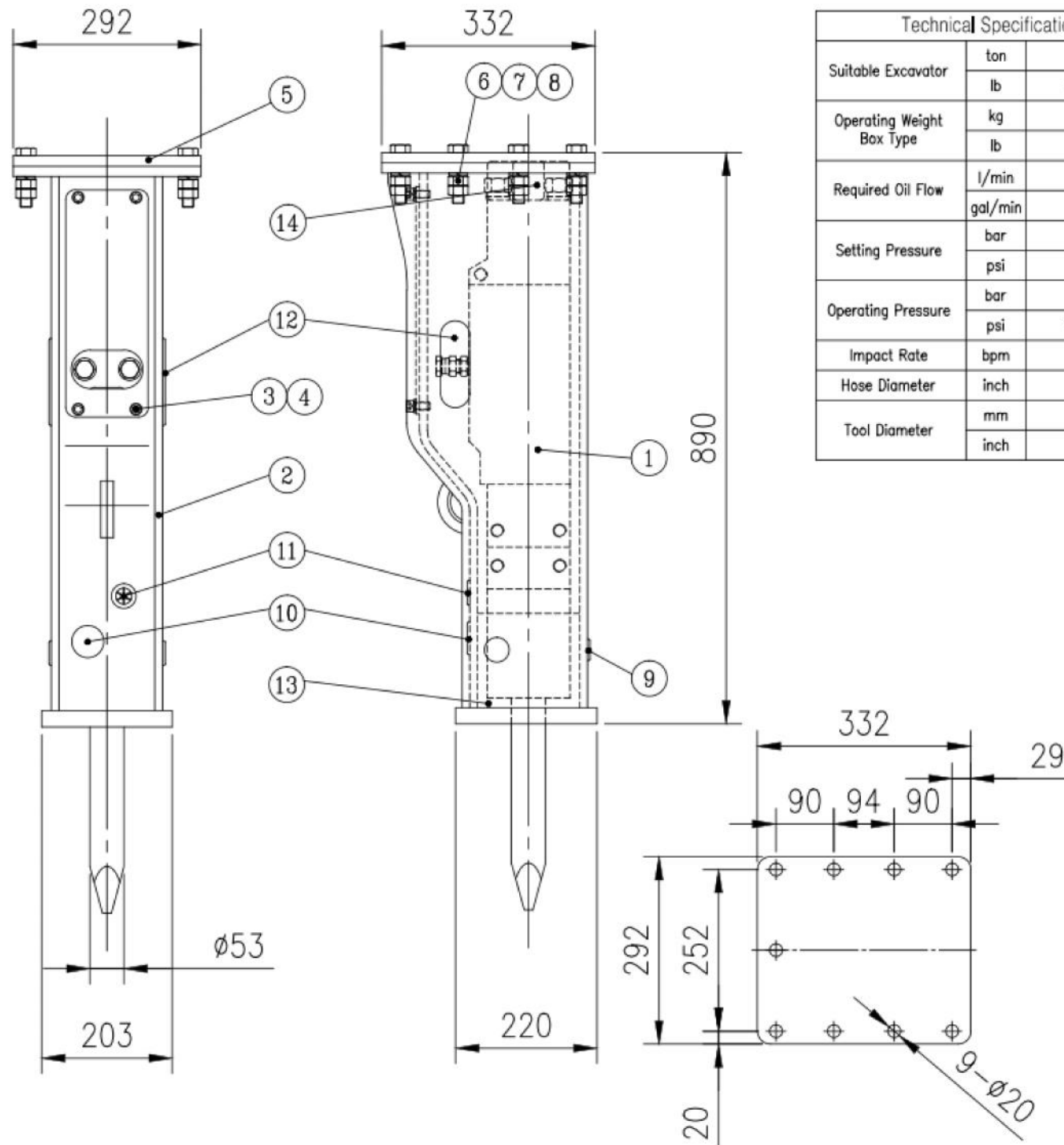


# EUROGRAB SH300



Technical Specification		
Suitable Excavator	ton	2.5~4.5
	lb	7716~9921
Operating Weight Box Type	kg	168
	lb	370
Required Oil Flow	l/min	25~50
	gal/min	6.6~13.2
Setting Pressure	bar	150
	psi	2134
Operating Pressure	bar	90~120
	psi	1280~1707
Impact Rate	bpm	600~1100
Hose Diameter	inch	1/2
Tool Diameter	mm	53
	inch	2.1

Tightening Torque & Gas Pressure		
through bolt nut	kg.m	25~30 30~35
Acc body Socket bolt	kg.m	-
Acc cover Socket bolt	kg.m	-
Accumulator cap & plug	kg.m	-
Side bolt	kg.m	80
Back head gas pressure	kg/cm <sup>2</sup>	16.5
	psi	235
accumulator gas pressure	kg/cm <sup>2</sup>	-
	psi	-

Part No	도번 Dwg No	품명 Description	재료 Mat	수량 Qty	규격 Spec & Size	비고 Remark
14	SB30/35	UPPER DAMPER		1		
13	SB30	LOWER DAMPER		1		
12	PL12535	ADAPTER PLUG		2		
11	PL3012X	GREASE PLUG		1		
10	PL4013	TOOL PIN PLUG		1		
9	PL3012	STOP PIN PLUG		3		
8	HN1825	HEX.NUT		18		
7	SW18	SPRING WASHER		9		
6	HB182580	HEX.BOLT		9		
5	300M-6103	UPPER PLATE		1		
4	SW12	SPRING WASHER		4		
3	WB1217525	WRENCH BOLT		4		
2	300M-6101	FRAME		1		
1	300M-1100	MAIN BODY ASS'Y		1		

기종(MODEL)	도명 DWG NAME	BOX BRACKET ASS'Y	척도 SCALE 1:6
300M	중량 W.T.(kg)		